

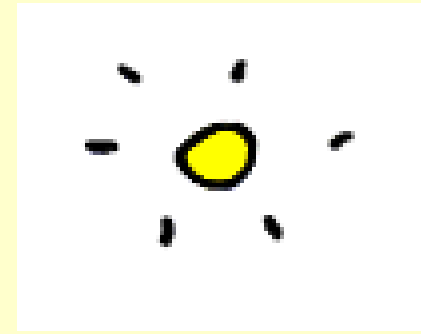


P5 & P6 PARENTS' BRIEFING 2024

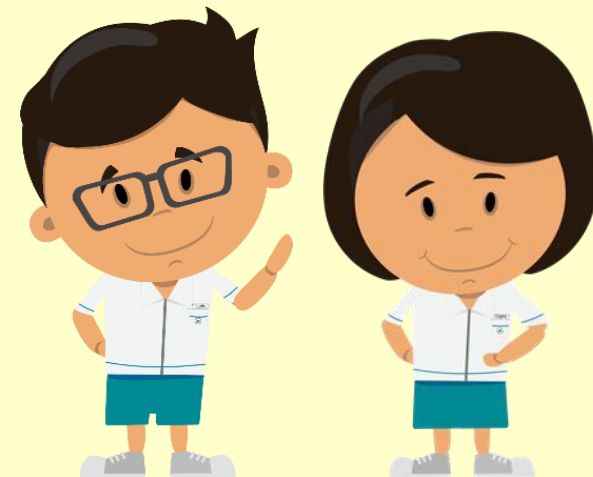


Gracious School , Life-long Learners

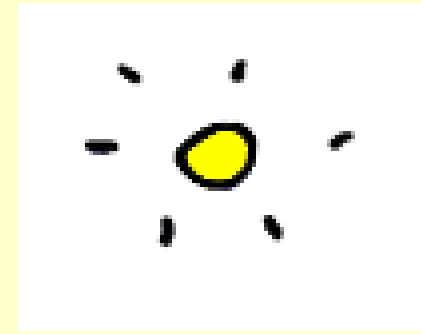
Programme (Part 1)



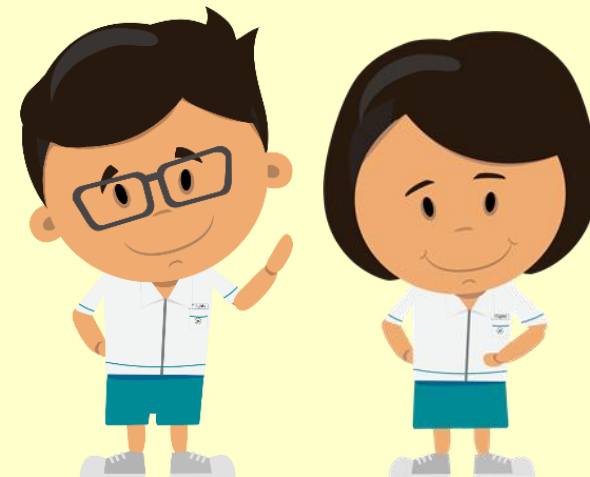
- Principal's Address
- PSLE Scoring & S1 Posting
- Direct School Admission (DSA)
- School Assessment & Matters
- P5 & P6 Level Events and Programmes



Programme (Part 2)



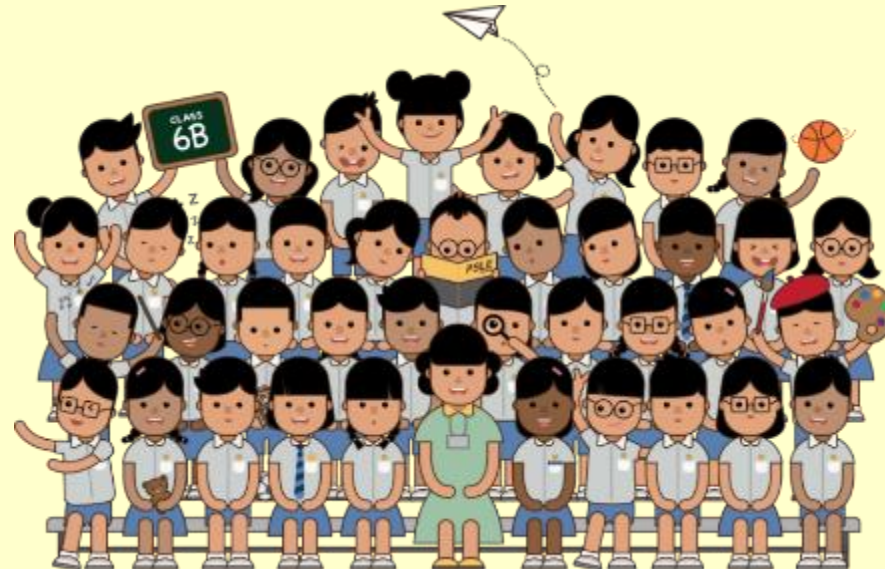
- Curriculum Matters
- Discipline
- Positive Classroom
- Home-School Partnership
- Time with FTs



The PSLE SCORING and S1 POSTING

**SUPPORTING STUDENTS AND PARENTS IN MAKING
INFORMED SCHOOL CHOICES FOR PSLE**

Briefing Deck to P5 and P6 Parents



Sharing About PSLE Matters



**How does the PSLE Scoring &
S1 Posting work?**

**How are students posted to
secondary schools?**

ACHIEVEMENT LEVELs (AL)

For Standard Subjects

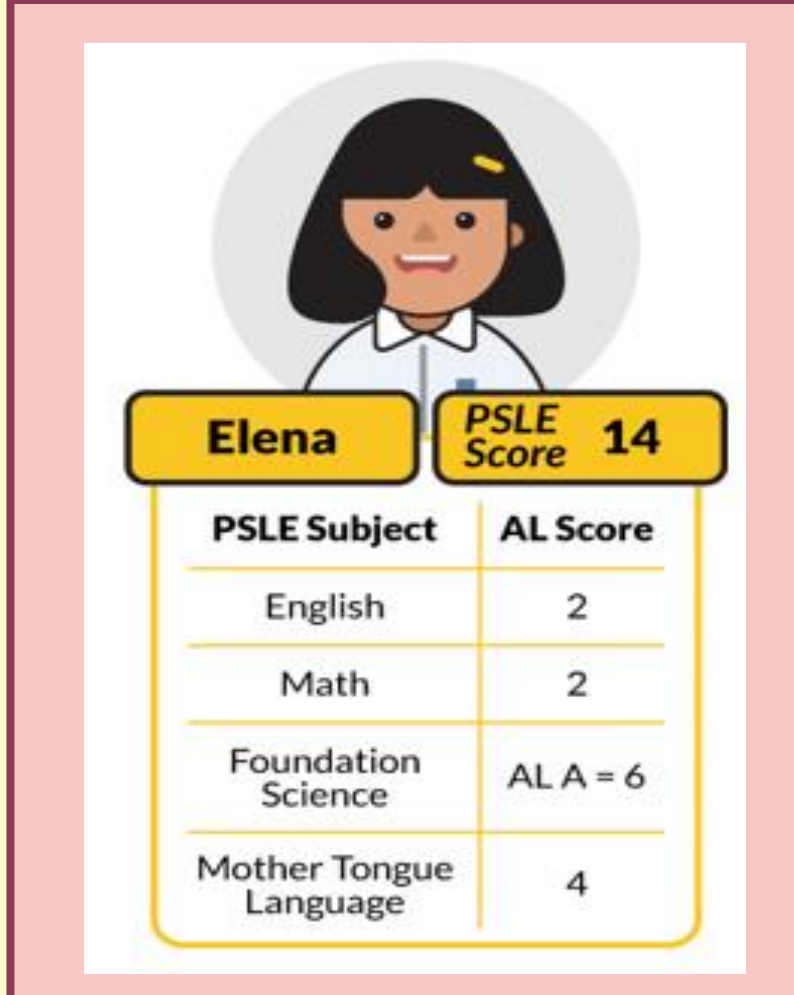
AL	RAW MARK RANGE
1	≥ 90
2	85 – 89
3	80 – 84
4	75 – 79
5	65 – 74
6	45 – 64
7	20 – 44
8	< 20

For Foundation Subjects

FOUNDATION LEVEL AL	FOUNDATION RAW MARK RANGE	EQUIVALENT STANDARD LEVEL AL
A	75 – 100	6
B	30 – 74	7
C	< 30	8

HOW DOES THE PSLE SCORING SYSTEM WORK?

- The overall PSLE Score is made up of 4 subject Achievement Levels (ALs).
- The PSLE Score can range from 4 to 32, with 4 being the best.



Elena PSLE Score **14**

PSLE Subject	AL Score
English	2
Math	2
Foundation Science	AL A = 6
Mother Tongue Language	4

FULL SBB: S1 POSTING

Three Posting Groups to ensure schools are accessible to diverse learners

From the 2024 S1 cohort, MOE will facilitate the admission of P6 students into S1 through 3 Posting Groups: **Posting Group 1, 2 and 3.**

Objective: Ensures that schools continue to admit a **diverse profile of students** and students have **access to a wide range of schools.**

PSLE Score	Posting Group	Subject level for most subjects
4 – 20	3	G3
21 and 22	2 or 3	G2 or G3
23 and 24	2	G2
25	1 or 2	G1 or G2
26 – 30 <i>(with AL 7 in EL and MA)</i>	1	G1

HOW DOES THE S1 POSTING WORK?

- Your child has **six choices** in selecting their secondary schools.
- Your child will be posted to a secondary school based on **academic merit, i.e., PSLE Score,** and their **choice order of schools.**
- If two or more students with the same PSLE Score vie for the last remaining place(s) in a school, the following tie-breakers are used in the following order:
 1. **CITIZENSHIP**
 2. **CHOICE ORDER OF SCHOOLS**
 3. **COMPUTERISED BALLOTING**
- The tie-breaker based on school choice order recognises the different considerations that families have in making school choices.



Choosing Suitable Secondary Schools


Factors to Consider



Preparing for S1 Posting Exercise



PSLE SCORE RANGES FOR ALL SECONDARY SCHOOLS

- Use the PSLE Score ranges as a reference alongside other important factors, such as the school's distinctive programmes, Co-Curricular Activities (CCA), culture, ethos, and proximity to home when shortlisting school choices that would best fit a student's educational needs.
- The PSLE Score ranges for individual secondary schools will be available for your reference on <https://moe.gov.sg/schoolfinder> and <https://go.gov.sg/exploreschools>. They reflect the PSLE scores of the students posted into these schools at the previous year's S1 Posting Exercise.
- A school's PSLE Score range (including Cut-Off-Point) for a particular year is not pre-determined before the posting, and vary from year to year, depending on the cohort's PSLE results and their school choices in that year's S1 Posting Exercise.



SchoolFinder Tool	MySkillsFuture Student Portal (Primary)
 https://www.moe.gov.sg/schoolfinder	 https://go.gov.sg/exploreschools

HOW DO WE INTERPRET THE PSLE SCORE RANGES?

The PSLE Score range refers to the PSLE Score of the first and last student admitted to a particular school in the previous year via the S1 Posting Exercise. This shows the range of student profiles who enter each school.

Example

XX Secondary School

PSLE Score range of 20XX (previous year's S1 Posting Exercise)

Posting Group 3	15 – 20
Posting Group 2	21 – 24
Posting Group 1	25 – 28

PSLE Score of the first student posted into the school in the respective PG.

PSLE Score of the last student posted into the school in the respective PGs [i.e., the school's **Cut-Off Point (COP)**].

Note: Posting Groups will be assigned based on PSLE Scores, mapped from existing PSLE Score ranges for Express, N(A) and N(T) streams.

EXAMPLE OF AN SAP SCHOOL'S PSLE SCORE RANGE

While students need not take HCL to enter SAP schools, students who pass HCL receive a posting advantage for admission. To reflect this, the PSLE Score ranges of SAP schools include the HCL grades of the first and last student admitted in the previous year via S1 Posting.

Example

XX Secondary School

PSLE Score range of 20XX (previous year's S1 Posting Exercise)

Posting Group 3	5 (D) – 12 (P)
Posting Group 2	
Posting Group 1	

PSLE Score and HCL grade of the first student posted into the school through PG3.

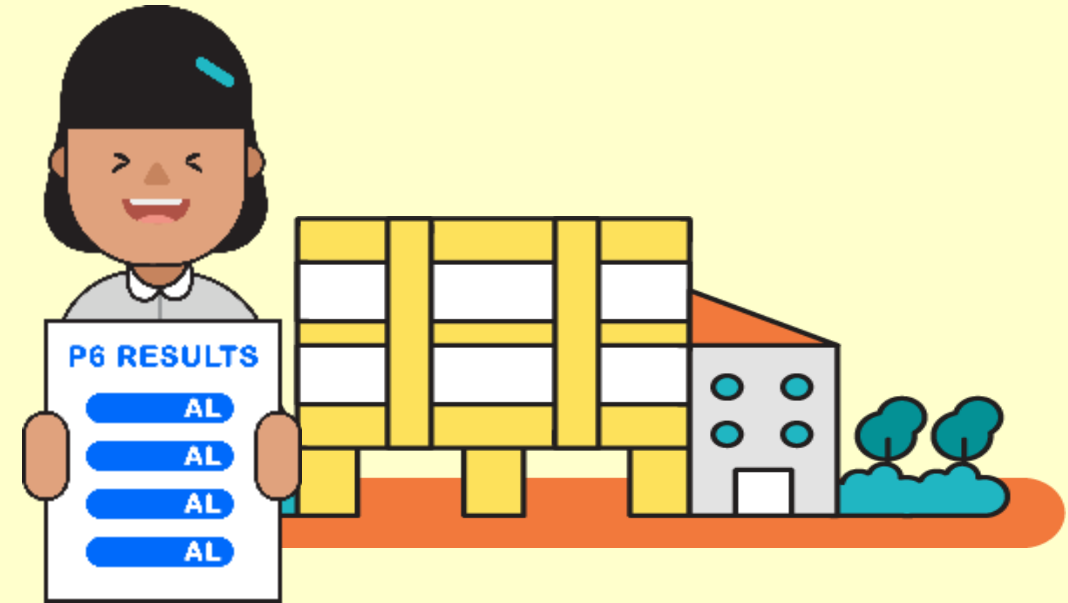
PSLE Score and HCL grade of the last student posted into the school through PG3 [i.e. the school's Cut-Off Point (COP)].

SCHOOL CHOICE JOURNEY

- The PSLE Score ranges are a **useful starting point** for parents and students to consider secondary schools.
- Use this information, together with other **important factors** such as the secondary schools' distinctive programmes, CCAs, ethos and cultures, to shortlist schools that would best fit the educational needs of the student.



PREPARING FOR THE S1 POSTING EXERCISE

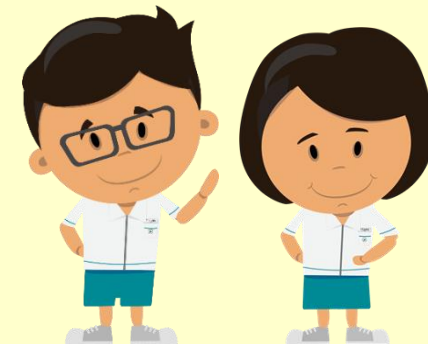


Use all 6 options with a range of Cut-off Points as this will increase your child's chances of being posted to a school of their choice.

Take reference from schools' PSLE Score ranges, which serve as a guide for you and your child to shortlist school choices. Consider at least 2-3 schools where your child's PSLE Score is better than the school's Cut-off Point.

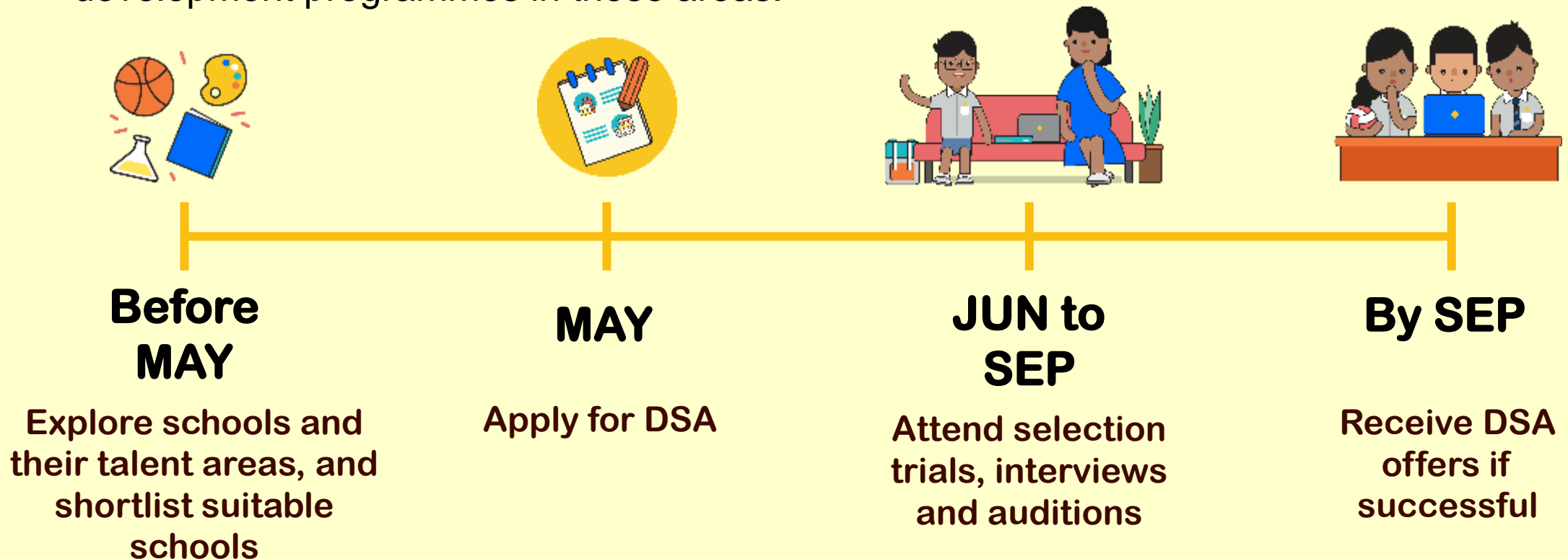
Direct School Admission (DSA)

DIRECT SCHOOL ADMISSION (DSA)



ENTERING SCHOOLS THROUGH DSA-SEC

- There is no change to the application and selection process with the shift to Full SBB.
- If your child has specific talents and strengths beyond the PSLE (e.g. areas such as sports, performing arts and leadership), consider the **Direct School Admission-Secondary (DSA-Sec)** as an alternative admission pathway to access secondary schools that have talent development programmes in these areas.



Centralised DSA-Sec Portal

- Students will be able to apply for DSA through a centralised **DSA-Sec Application Portal**, using a common application form
- No need to submit testimonials or hardcopy documents to the secondary school during application
- Apply through the portal via one of the parents' SingPass login. Parents who do not have access to SingPass can approach their child's primary school for assistance.
- Choose up to three schools and three talent areas in the DSA-Sec application.

Examples of Possible Combinations

EXAMPLE 1	Talent(s)	School(s)
	Choir	School A
	Choir	School B
	Choir	School C

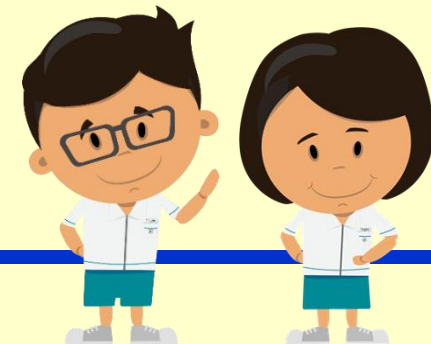
EXAMPLE 2	Talent(s)	School(s)
	Choir	School A
	String Orchestra	School A
	Choir	School B

EXAMPLE 3 (Not allowed)	Talent(s)	School(s)
	Choir	School A
	String Orchestra	School A
	Mathematics	School A

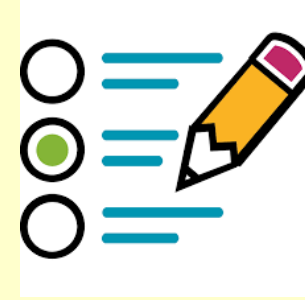
Does the PSLE results matter with a confirmed DSA-Sec Offer?

- Your child's PSLE results will still be **used to determine the secondary school posting group he/she is eligible for.**
- Even if he/she has a Confirmed Offer, he/she **must qualify for the posting group offered by the school** to be admitted to the DSA-Sec school

Assessment Matters



Assessment Weighting (P5 & P6)



	Semester 1		Semester 2	
	Term 1	Term 2	Term 3	Term 4
Primary 5	Formative Assessment (FA)			
	Weighted Assessment (WA)- 10%	Weighted Assessment (WA)- 15%	Weighted Assessment (WA)- 15%	EYE - 60%
Primary 6	Formative Assessment (FA)			
	-	-	Preliminary Exam (100%)	PSLE



How do we monitor students' progress?

- Even with the removal of mid year exam for P5 & P6, teachers will continue to assess their students. Eg: daily work, FAs and WAs
- Parents will be kept informed of the child's progress. Eg: PCTC, Class Dojo etc



2024 PSLE Calendar (tentative)

Examination	Dates
Oral Exam	Tue 13 Aug – Wed 14 Aug
Listening Comprehension	Fri 13 Sep
Written Exam	Thu 26 Sep – Wed 2 Oct
Marking Exercise	Mon 14 Oct – Wed 16 Oct

<https://www.seab.gov.sg/>



Punctuality



- Our students are expected to be in the **classroom by 7.30 a.m.** for flag-raising ceremony.
- Students may receive a **‘Letter of Warning’** or a **‘Fair’ Conduct Grade** should this persist.



What are the school rules on digital device use?

- Use of cellular phones to contact parents/caregivers only after school at the canteen and foyer
- All digital devices should be switched-off during curriculum hours and after school programmes
- Students are to take good care of their belongings. The school will not be held responsible for the loss or damage of any of these electronic devices.



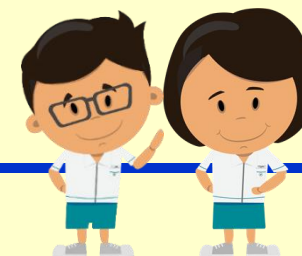
P5 & P6 Level Events & Programmes



Gracious School , Life-long Learners

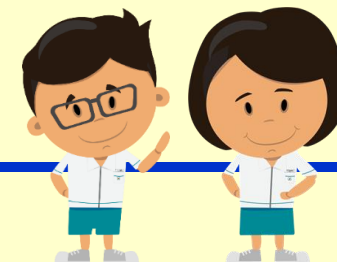
Programme	Date
<p><u>P5 Social Studies LJ to Indian Heritage Centre</u> Understand and appreciate our rich cultural and historical heritage</p>	12 & 16 January
<p><u>NE Show</u> To raise the sense of belonging and national pride in our students through the experience of attending a major national event</p>	Term 3 - July (exact date to be confirmed)
<p><u>P5 LLP Camp</u> To connect E'lights' learning experience outside of school context with elements of Peer Support and Relationships (PSR)</p>	25 – 27 July
<p><u>School Holiday Supplementary Class</u> Supplementary Classes (EL, MA, SC & MT)</p>	5 & 6 September

Primary 5



Programme	Date
<p><u>Community Outreach</u> To reach out to our community in the midst of community celebrations as part of our Values-in-Action Programme</p>	8 March
<p><u>School Holiday Supplementary Class</u> Supplementary Classes (EL, MA, SC & MT)</p>	20 & 21 June 5 & 6 September
<p><u>P6 Social Studies LJ to Asian Civilisation Museum</u> To understand the many historical connections between cultures and civilizations in Asia, and between Asia and the world</p>	10 & 11 July

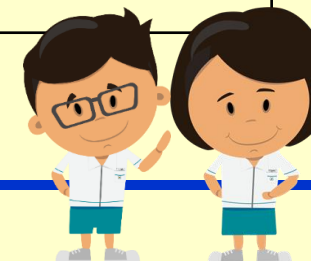
Primary 6



Gracious School , Life-long Learners

Programme	Date
<p><u>Education & Career Guidance (ECG)</u> To explore their educational and career interests.</p>	TBC
<p><u>Lifelong Learning Programme (Dragonboat)</u> To provide students the opportunity to experience the great outdoors and to give them the confidence to step out of their comfort zones</p>	1 November
<p><u>Social Etiquette & Motivation Workshop</u> To equip students with knowledge and skills on appropriate dining etiquette and behaviour expectations in various social settings</p>	6 & 8 November
<p><u>Award Presentation & Graduation Ceremony</u> To provide recognition in academic & non-academic areas To celebrate the students' journey in East Spring Primary</p>	15 November

Primary 6



Student Details Form (SDF) with Medical Condition declaration

- The Ministry of Education (MOE) would like to request for an update of your information and your child's/ward's information via the Student Details Form (SDF) for the purpose of providing educational services to your child/ward in MOE schools.
- At the start of the new academic year, **BOTH** parents/legal guardians are requested to login to the SDF portal using your Singpass account to submit your information and information of your child/ward. Authorised Caregivers can only submit your own information.
- The SDF portal can be accessed via desktop computers or mobile devices such as laptops and mobile phones. We seek your kind assistance to complete the submission **by 31 Jan 2024**.



Question	Response
<p>1) Will the academic subjects be more in-depth / difficult to grasp the understanding for P4 students promoted to P5?</p> <p>2) Will there be extra help to cope with learning difficulties for academic subjects?</p> <p>3) How do you rate the pace of learning in P5, will it be modest to moderate at beginning of Semester 1 to intensive towards the EYE 2024?</p>	<p>The design of MOE curriculum is developmental and age-appropriate. As your child progresses from P4 to P5, the demand of the curriculum will increase progressively. Teachers are trained to differentiate their instructions to cater to the needs of students with different readiness. Your child may be asked to attend remedial classes if there is a need. At the end of P5, if your child still have difficulty coping with curriculum, adjustment to the subject combination may be proposed to help him/her to cope better with the demands.</p>



For any clarifications, please contact

Mrs Shirlyn Choo

Assistant Year Head (Upper Primary)

tok_shi_shi@schools.gov.sg

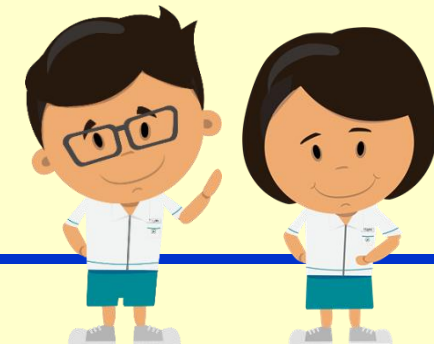


EVERY CHILD MATTERS TO US

Everyone Makes a Difference



Let's work together!



Gracious School , Life-long Learners